



Cleveland Heights-University Heights City School District

Middle School Boundary Planning
School Board Meeting
January 7, 2014

Introduction

- **Scott Leopold**
 - Project Director – DeJONG-RICHTER
 - Provided GIS services for CHUH since 2005



Capacity

Capacity can be difficult to define and can fluctuate from year to year due to changing educational programs.

Roxboro and Monticello Middle Schools were assessed by DeJONG-RICHTER on Thursday, Sept 12th

Current Square Footage

Monticello:	124,062
Roxboro:	111,355
Wiley:	139,774
Total:	375,191 = 278 Square Feet Per Student

Capacity

- Used 25 students for regular teaching stations
- Used 10 students for special education teaching stations
- Gymnasium = 1 teaching station
- New Tech Lab (Monticello Rm. 219) = 1 teaching station
- Library/Media Center = 0 teaching stations
- Extended Learning Area (Roxboro Rm. L-9) = 0 teaching stations
- Used an 85% load factor to account for planning periods

Facility	General Education					Special Education	Gross Capacity			Capacity @ 85%
	Core Academics	Performing Arts	Physical Education	Visual Arts	Total		General Education	Special Education	Total	
Monticello	30	2	3	1	36	4	900	40	940	799
Roxboro	31	2	2	1	36	5	900	50	950	808
Total	61	4	5	2	72	9	1,800	90	1,890	1,607

Projected Enrollment

Grade	2012-13 Actual	2013-14	2014-15	2015-16	2016-17	2017-18	2018-19	2019-20	2020-21	2021-22	2022-23
Pre-K (ECE, special needs)	2,653	2,630	2,625	2,586	2,562	2,525	2,511	2,494	2,485	2,487	2,500
6 - 8	1,328	1,311	1,333	1,317	1,287	1,313	1,292	1,299	1,269	1,250	1,222
9 - 12	1,699	1,685	1,604	1,580	1,595	1,551	1,582	1,546	1,556	1,550	1,535
Pre-K - 12 Total	5,680	5,626	5,562	5,483	5,444	5,389	5,385	5,339	5,310	5,287	5,257

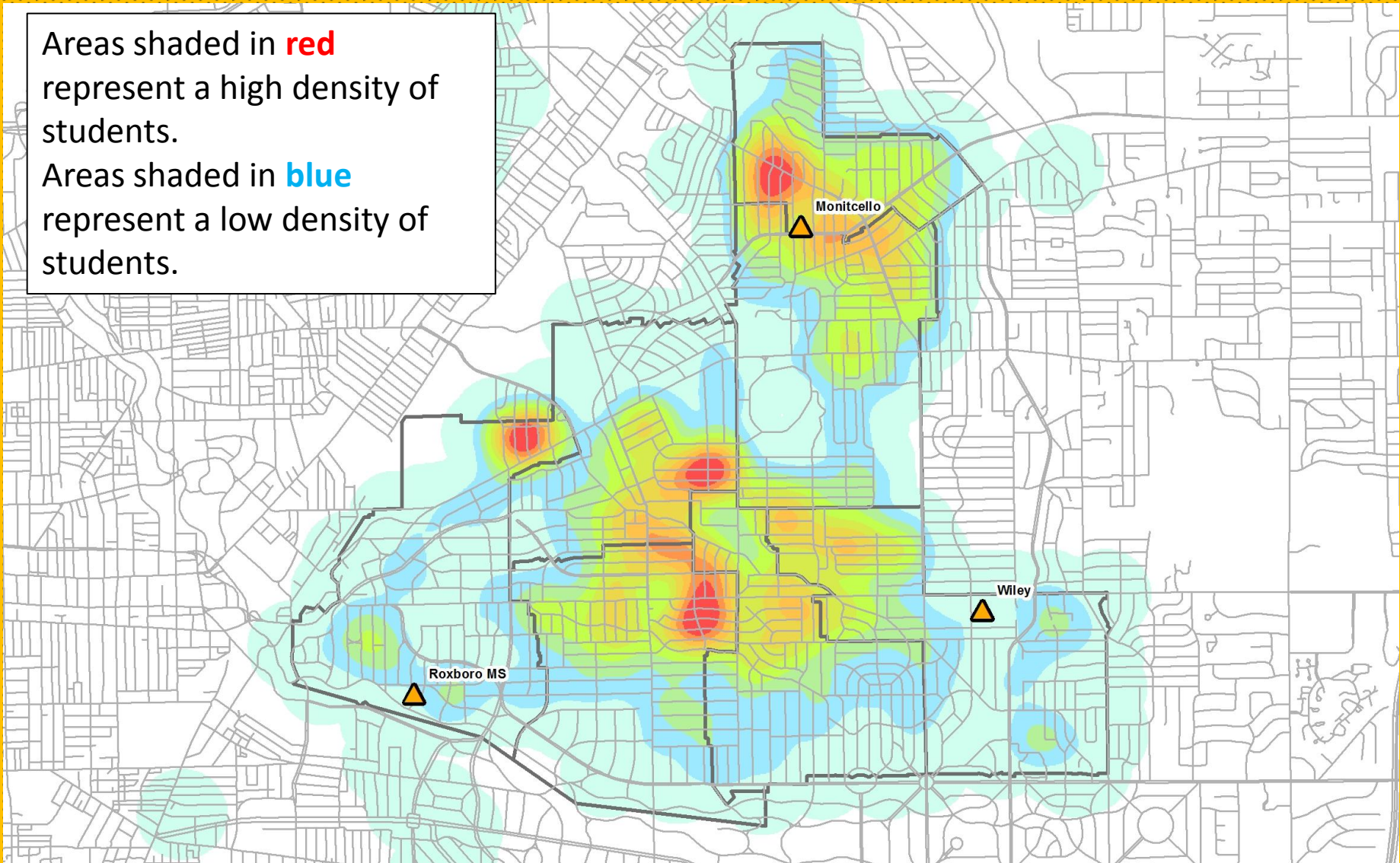
Source: Future Think

- Enrollment is projected to decline slightly over the next 10 years
- Middle School enrollment is projected to stay below the combined capacity of Monticello and Roxboro Middle Schools

Demographics - K-12 Student Density

Areas shaded in **red** represent a high density of students.

Areas shaded in **blue** represent a low density of students.



Boundary Change Criteria

- **Balanced Enrollment**
- **Clean Feeder Patterns**
- **Disruption of Students**
- **Longevity**
- **Racial Diversity**
- **Socio-economic Diversity**
- **Transportation Costs**
- **Other – Additional Criteria generated tonight**

Criterion – Balanced Enrollment

- This criterion prioritizes creating boundaries that would assign equal numbers of students to both middle schools.

Criterion - Clean Feeder Patterns

- This criterion prioritizes creating boundaries that are aligned with current elementary boundaries, such that each elementary boundary would feed into one middle school exclusively.
 - Boulevard Elementary currently splits among all three middle schools.
 - Fairfax and Noble currently split between two middle schools.

Criterion – Disruption of Students

- This criterion prioritizes rezoning the fewest number of students possible.

Criterion – Longevity

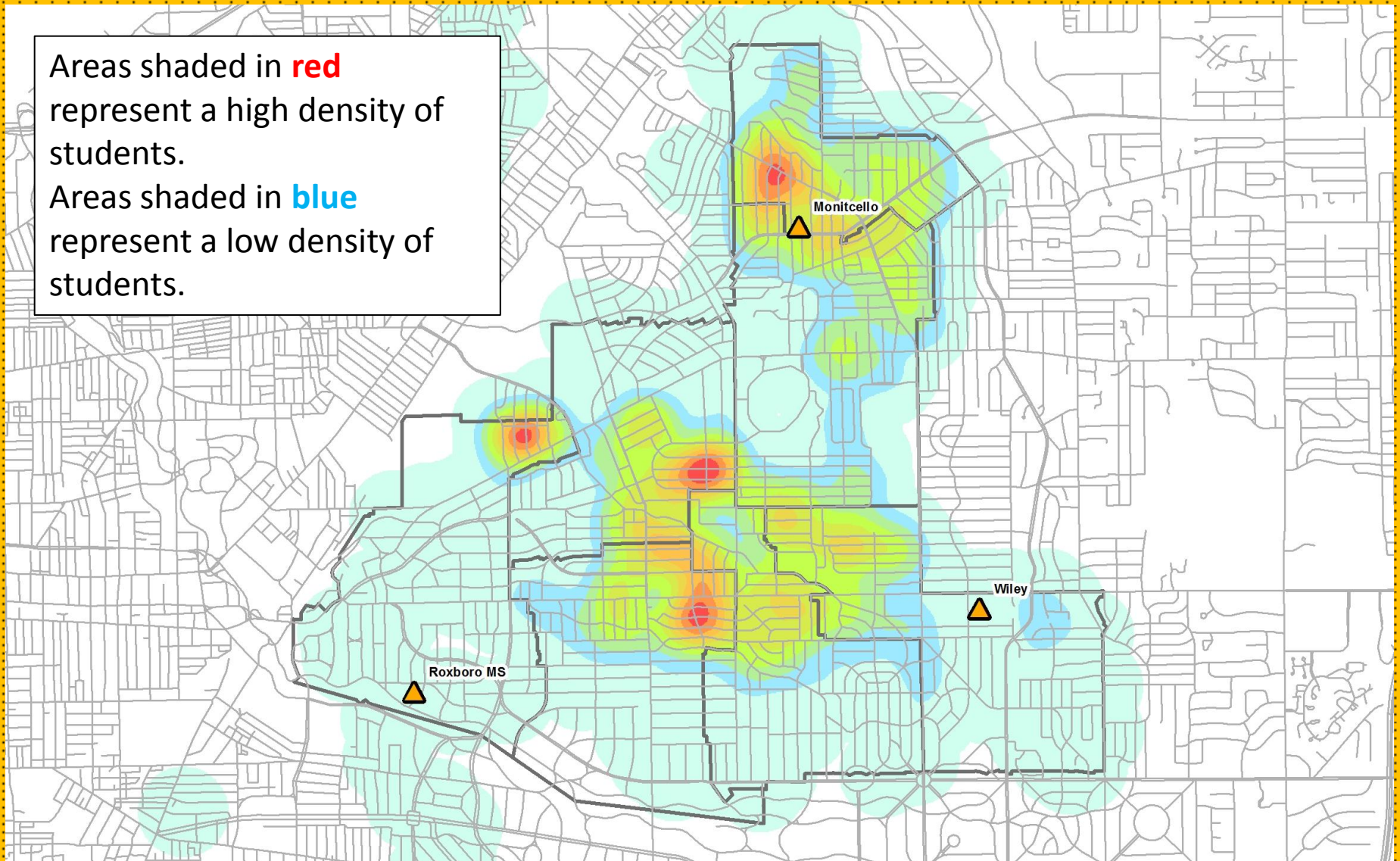
- This criterion prioritizes creating boundaries that are intended to remain unchanged for a longer period of time.

Criterion – Racial Diversity

- This criterion prioritizes creating boundaries that reflect the racial makeup of the District as a whole.
 - Currently 80% Black and Multi-Racial

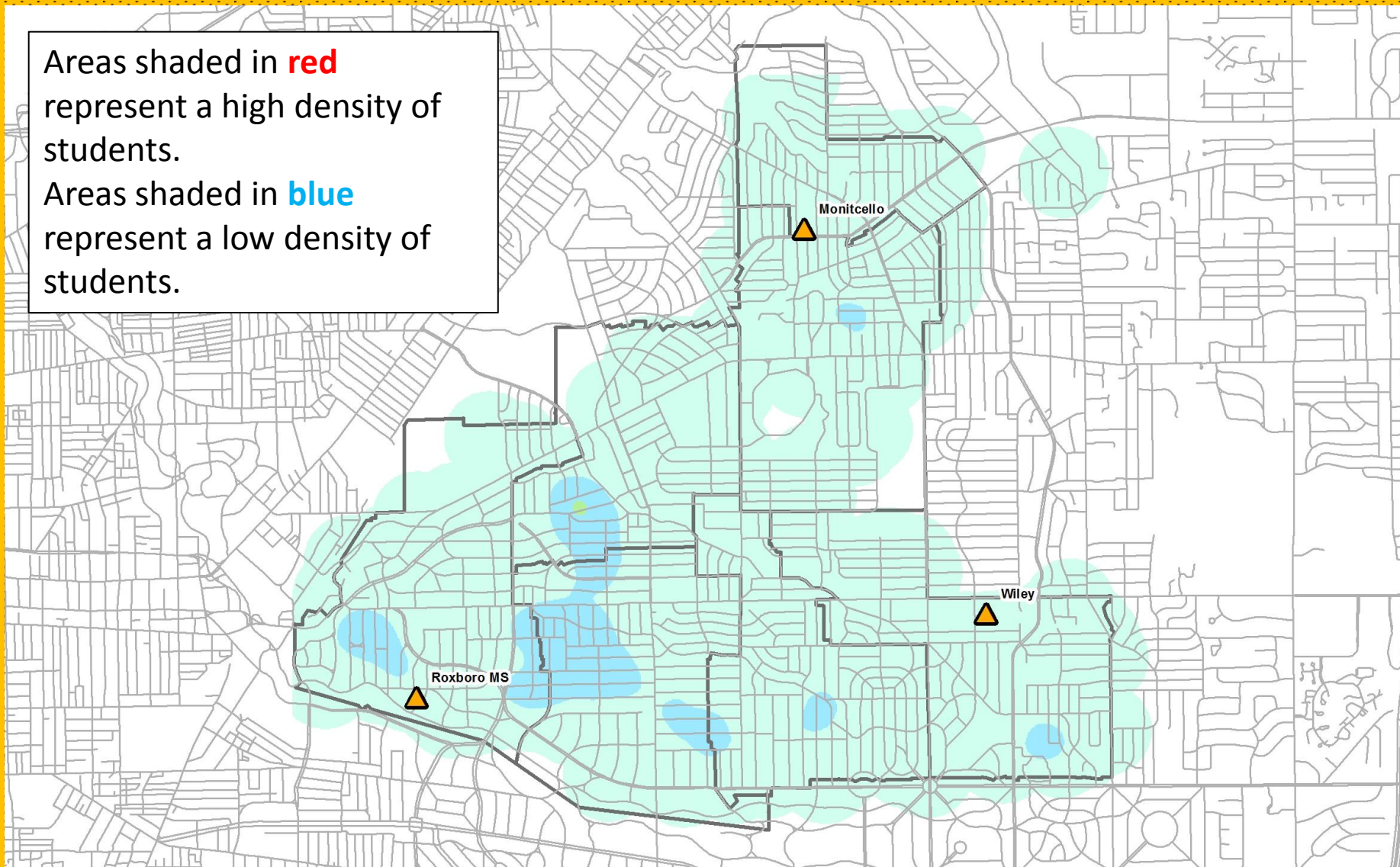
Demographics – African American Students

Areas shaded in **red** represent a high density of students.
Areas shaded in **blue** represent a low density of students.



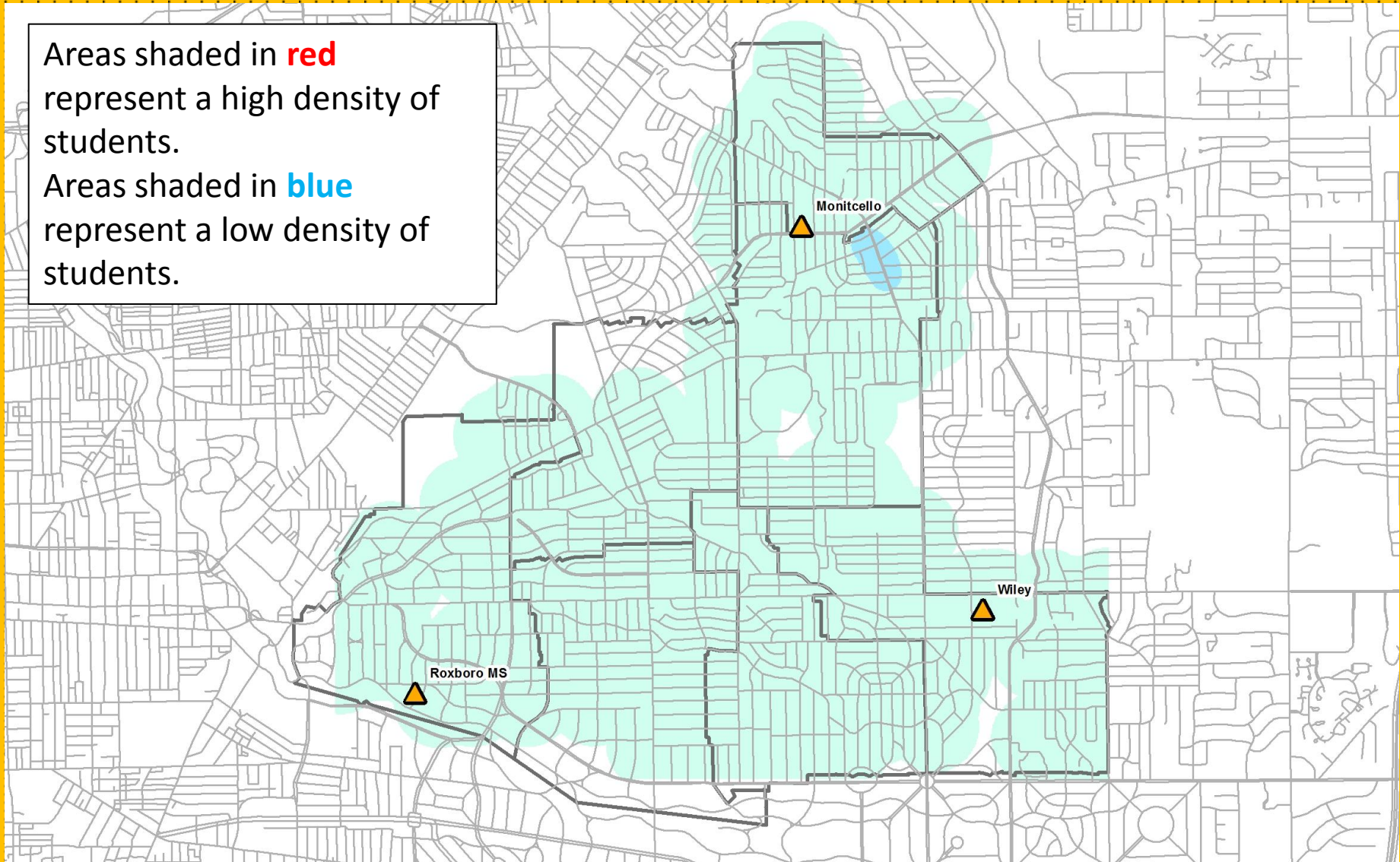
Demographics - White Students

Areas shaded in **red** represent a high density of students.
Areas shaded in **blue** represent a low density of students.



Demographics - Other Race Students

Areas shaded in **red** represent a high density of students.
Areas shaded in **blue** represent a low density of students.

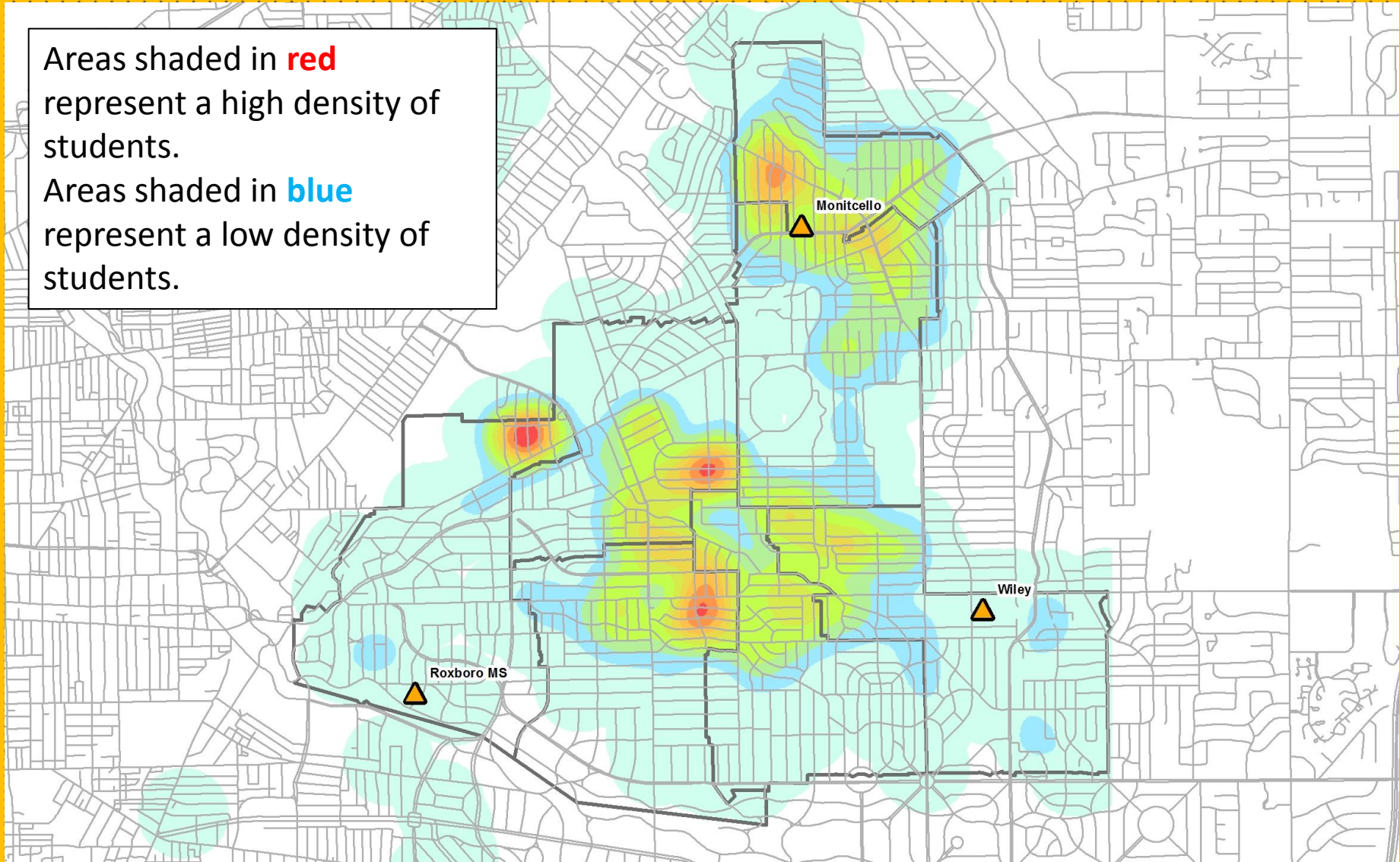


Criterion - Socio-economic Diversity

- This criterion prioritizes creating boundaries that reflect the socio-economic makeup of the District as a whole.
 - Currently 71% economically disadvantaged

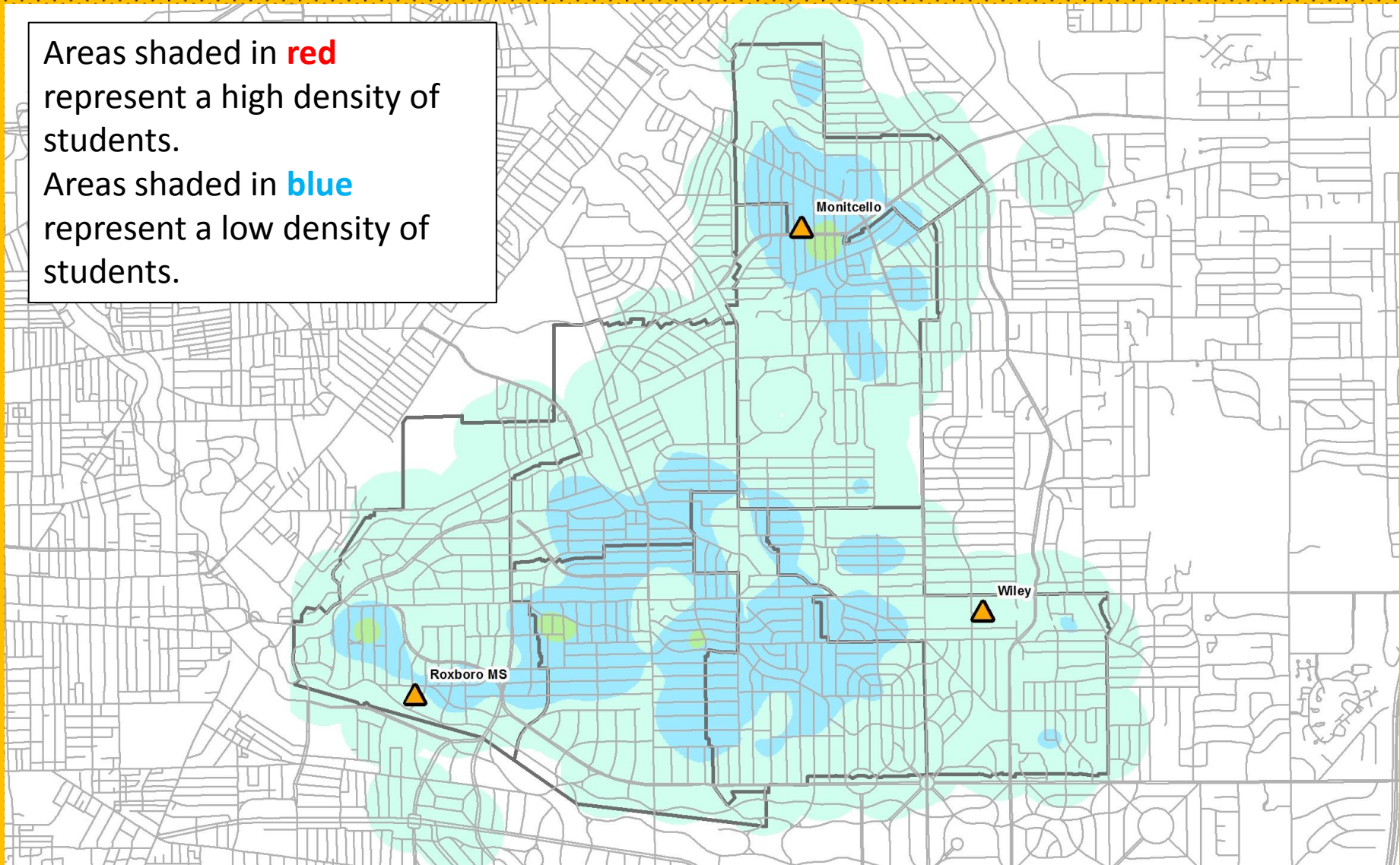
Demographics - Low SES Students

Areas shaded in **red** represent a high density of students.
Areas shaded in **blue** represent a low density of students.



Demographics - Non-Low SES Students

Areas shaded in **red** represent a high density of students.
Areas shaded in **blue** represent a low density of students.



Criterion - Transportation Costs

- This criterion prioritizes creating boundaries that minimize the number of students that would need to ride a bus and maximize the number of students that would walk to school.

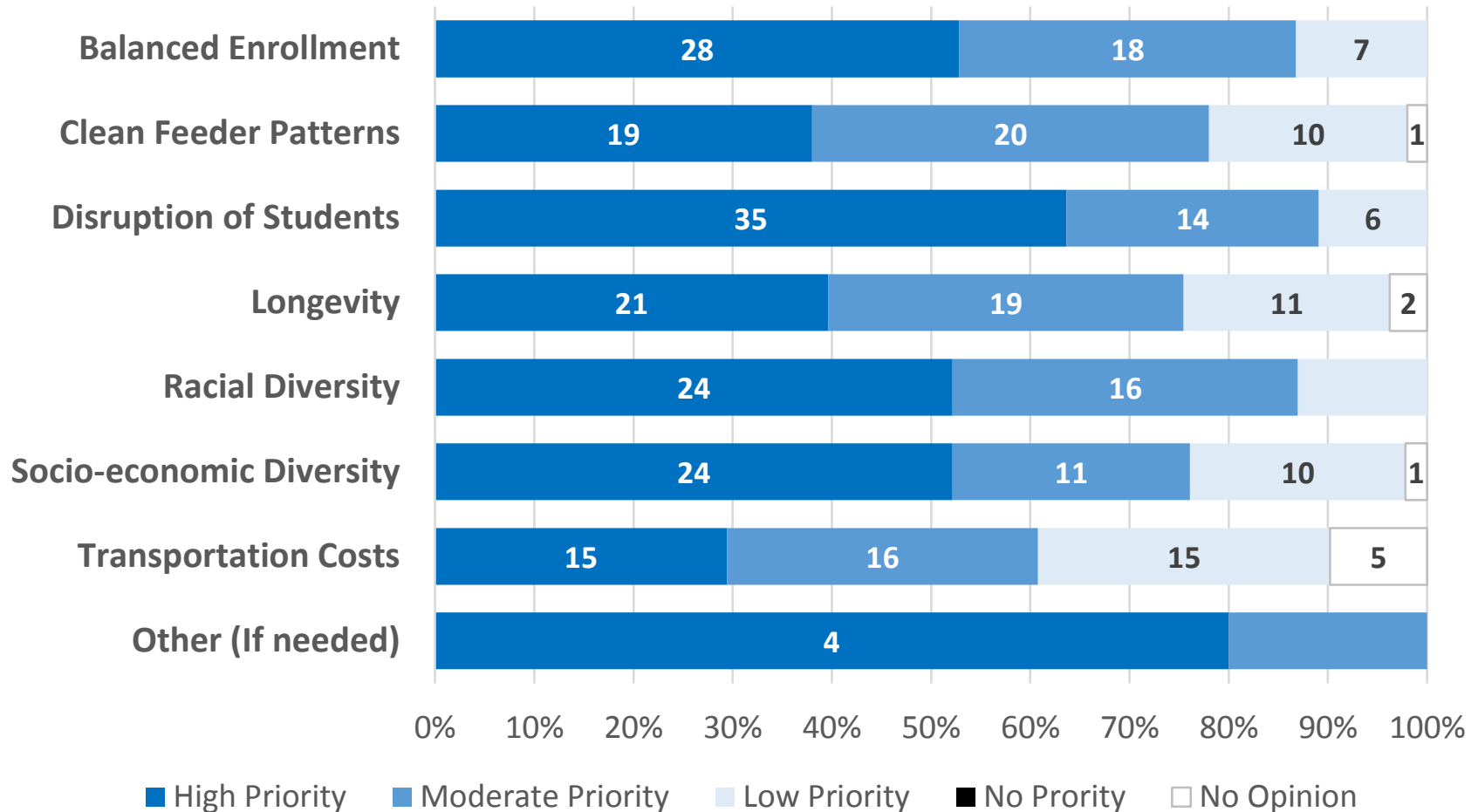
Community Meeting Results

- **55 Individual Participants** – (Paper Questionnaires)
- **15 Groups** (Paper Questionnaires)
- **61 Online Participants** (Online Questionnaires)

	Individual	Online
Boulevard ES	7	12
Canterbury ES	15	17
Gearity ES	10	8
Fairfax ES	6	6
Noble ES	3	8
Oxford ES	2	3
Roxboro ES	8	8
Monticello MS	3	7
Roxboro MS	14	16
Wiley MS	21	12
Cleveland Heights HS	16	19
Delisle Options Center	0	2
Other	1	2

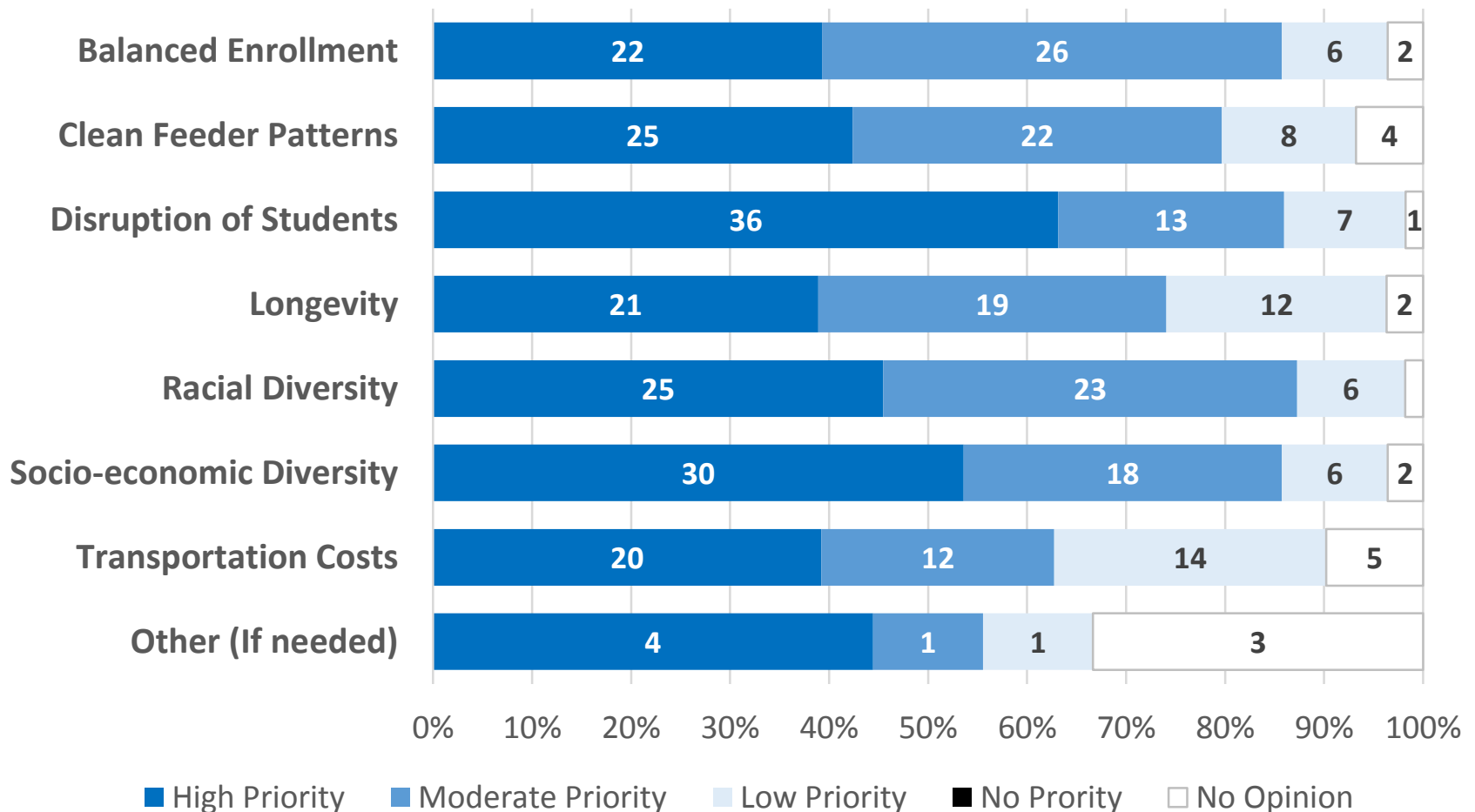
Individual (Paper) Results

Boundary Change Criteria Priority



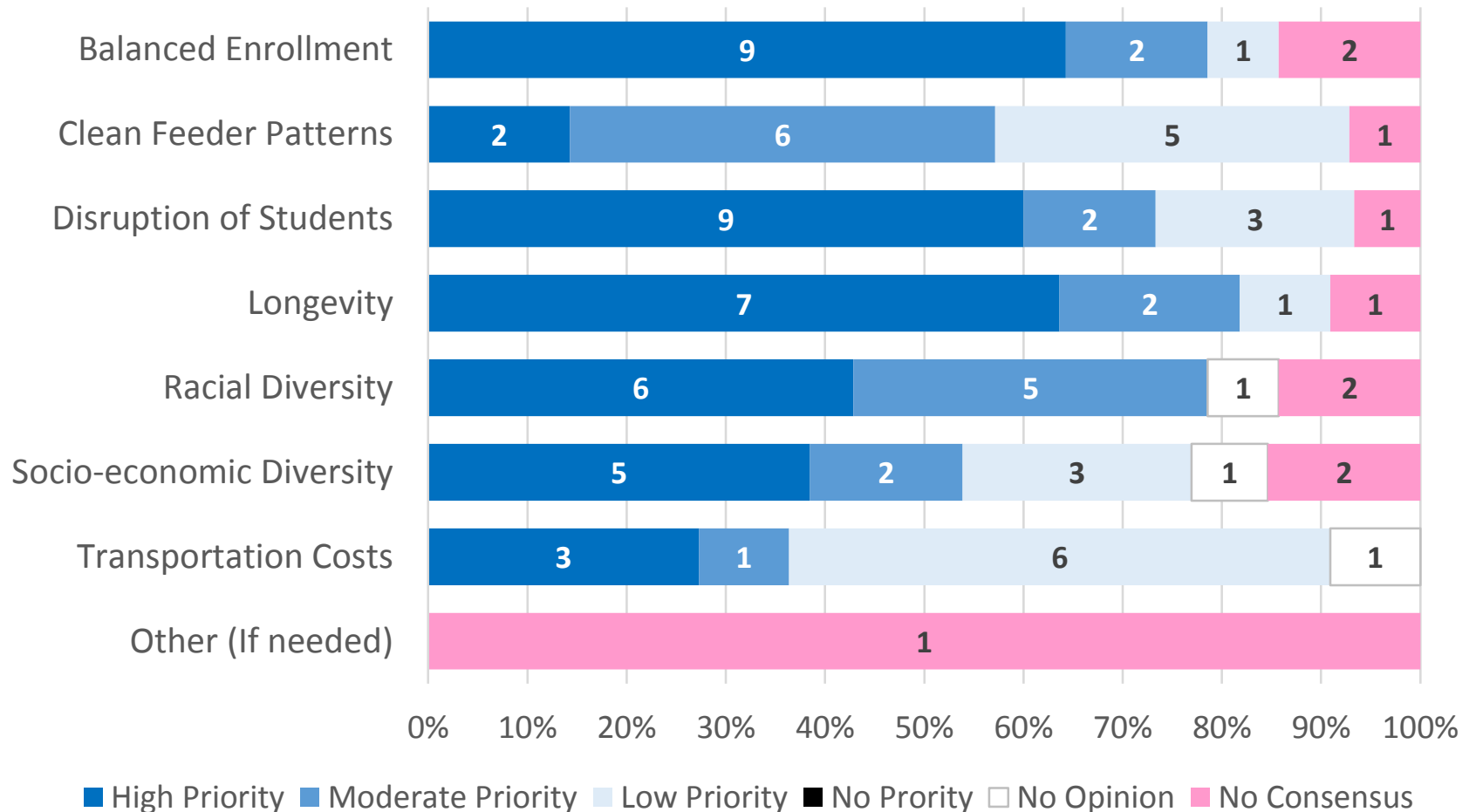
Online Results

Boundary Change Criteria Priority



Group (Paper) Results

Boundary Change Criteria Priority



Combined Results

Please select three (3) of the following criteria which you believe should be considered above the others in a boundary change process.

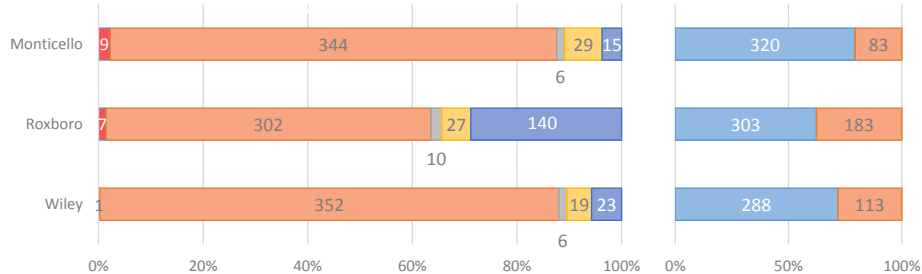
	Individual	Online	Group
Criteria			
Balanced Enrollment	21%	14%	22%
Clean Feeder Patterns	14%	13%	4%
Disruption of Students	19%	18%	18%
Longevity	8%	13%	9%
Racial Diversity	16%	14%	20%
Socio-economic Diversity	11%	15%	13%
Transportation Costs	12%	11%	9%
Other	1%	1%	2%
		No Consensus	2%

Prevalent Comments

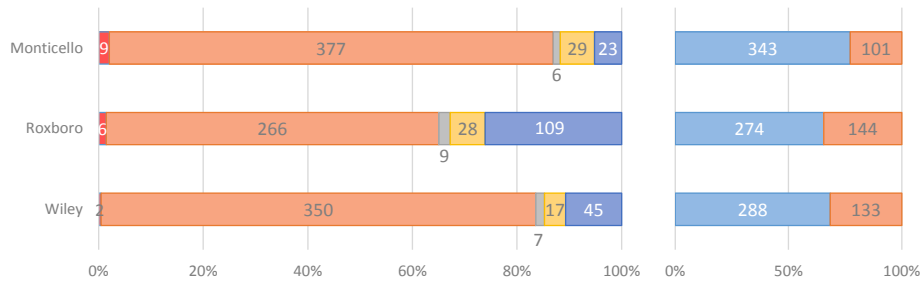
- Integration of the Wiley PTA into the remaining PTA's
- Make sure the students feel welcome in their new schools.
- Extra efforts on communication.
- Why was Wiley selected for closure over Roxboro or Monticello?
- Why isn't the high school being built on a new site?

Options – Current Boundaries

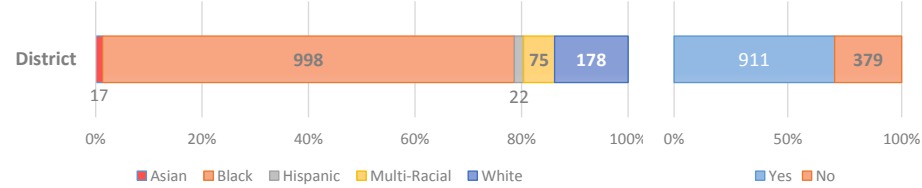
Current Enrollment Racial Economically



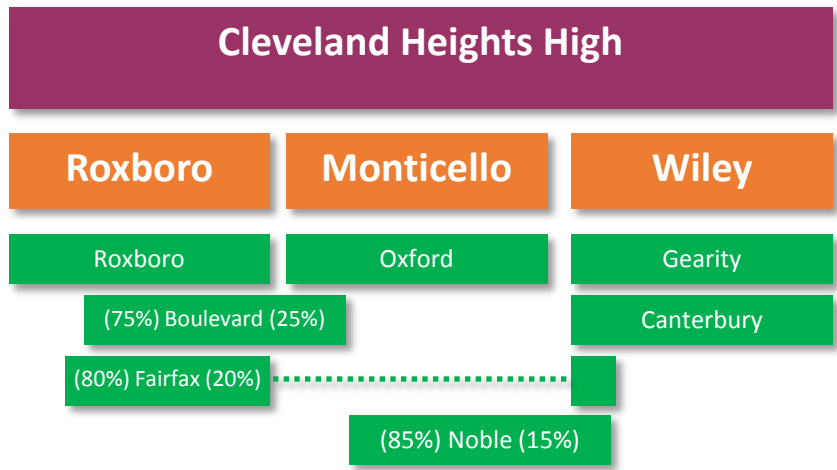
Current Live-In



District Total / Average



Feeder Pattern



Transportation Eligibility

	Total Live In	Less than 2 miles	Greater than 2 miles
Monticello	444	442	2
Roxboro	418	265	153
Wiley	421	411	10
Total	1,283	1,118	165

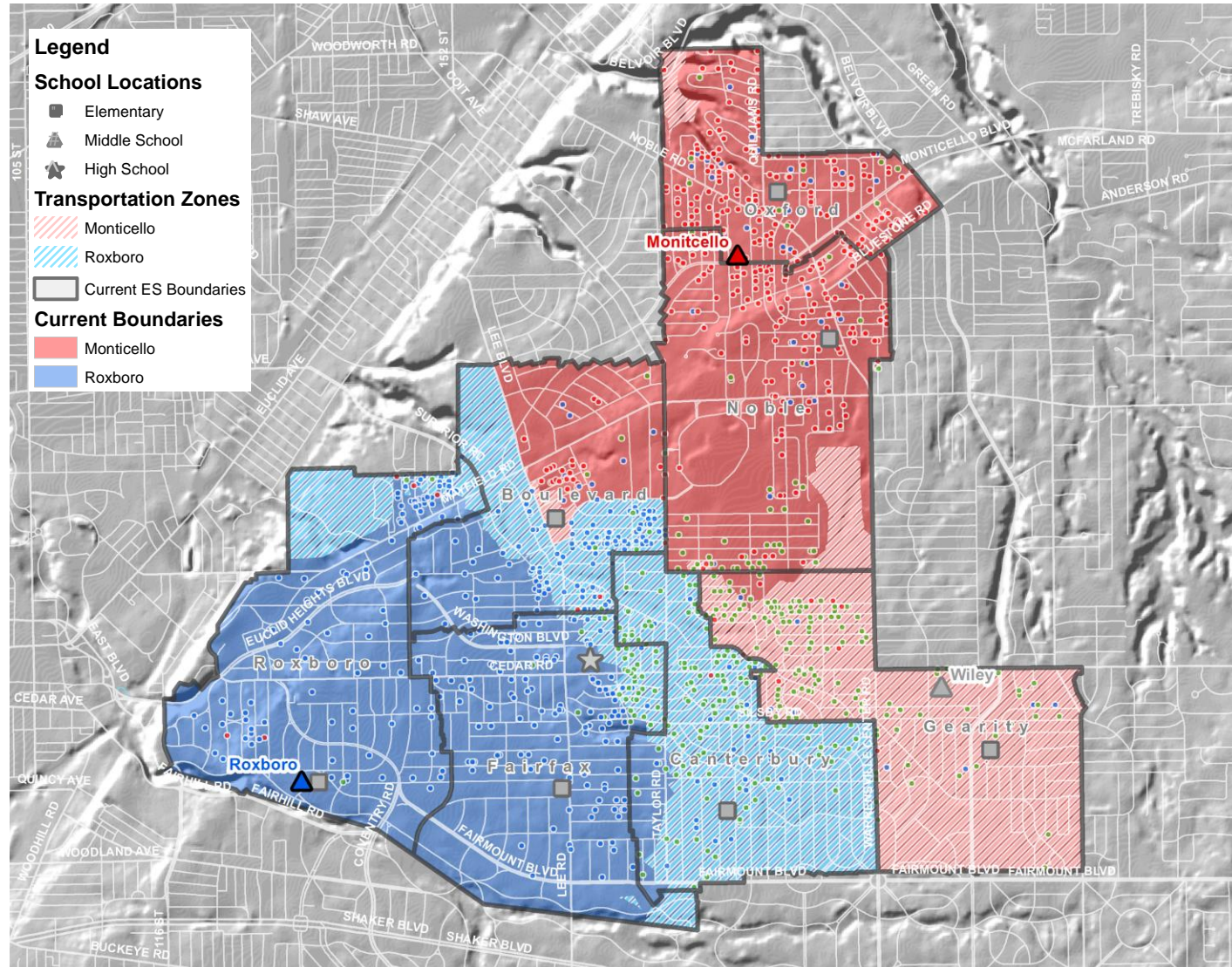
Option 1: Maintain Boulevard Split | Canterbury, Fairfax, and Roxboro Feed to Roxboro | Gearity, Oxford, and Noble Feed to Monticello

Strengths:

- Directly impacts the fewest number of students.
- Lowest transportation eligibility increase compared to other options
- Balances enrollment between both schools
- Future flexibility

Challenges:

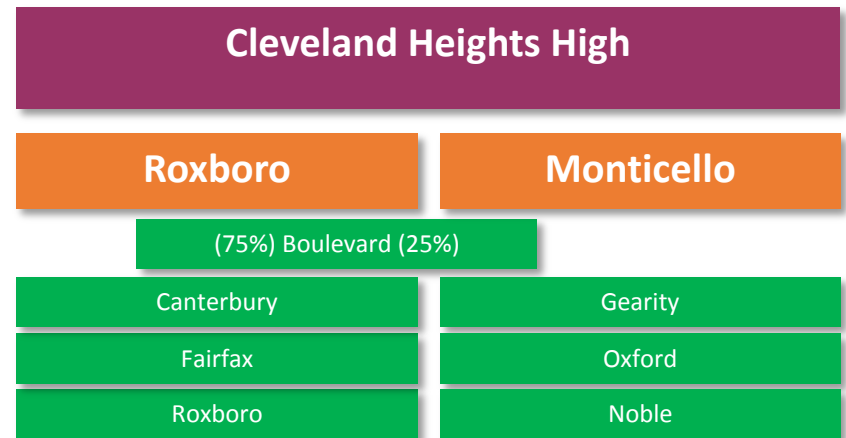
- Does not eliminate all split feeder patterns.
- Splits the current Wiley population between both schools.



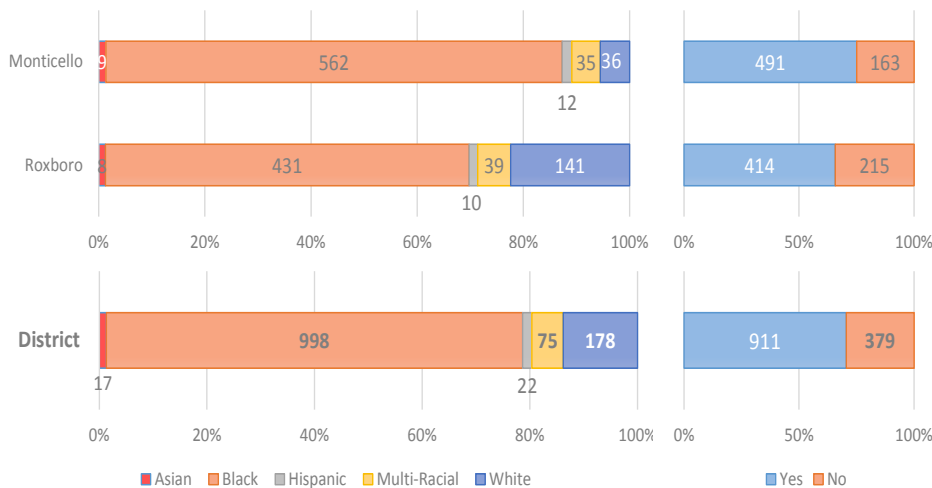
Option 1: Maintain Boulevard Split | Canterbury, Fairfax, and Roxboro Feed to Roxboro | Gearity, Oxford, and Noble Feed to Monticello

Current School	New School		
	Monticello	Roxboro	Total
Monticello	444	-	444
Roxboro	-	418	418
Wiley	210	211	421
Total	654	629	1,283
Capacity	799	808	
Utilization	82%	78%	
Total # of students moved	421		

Feeder Pattern



Racial Balance Economically Disadvantaged



Transportation Eligibility

	Total Live In	Less than 2 miles	Greater than 2 miles
Monticello	654	481	171
Roxboro	629	277	263
Total	1,283	758	434

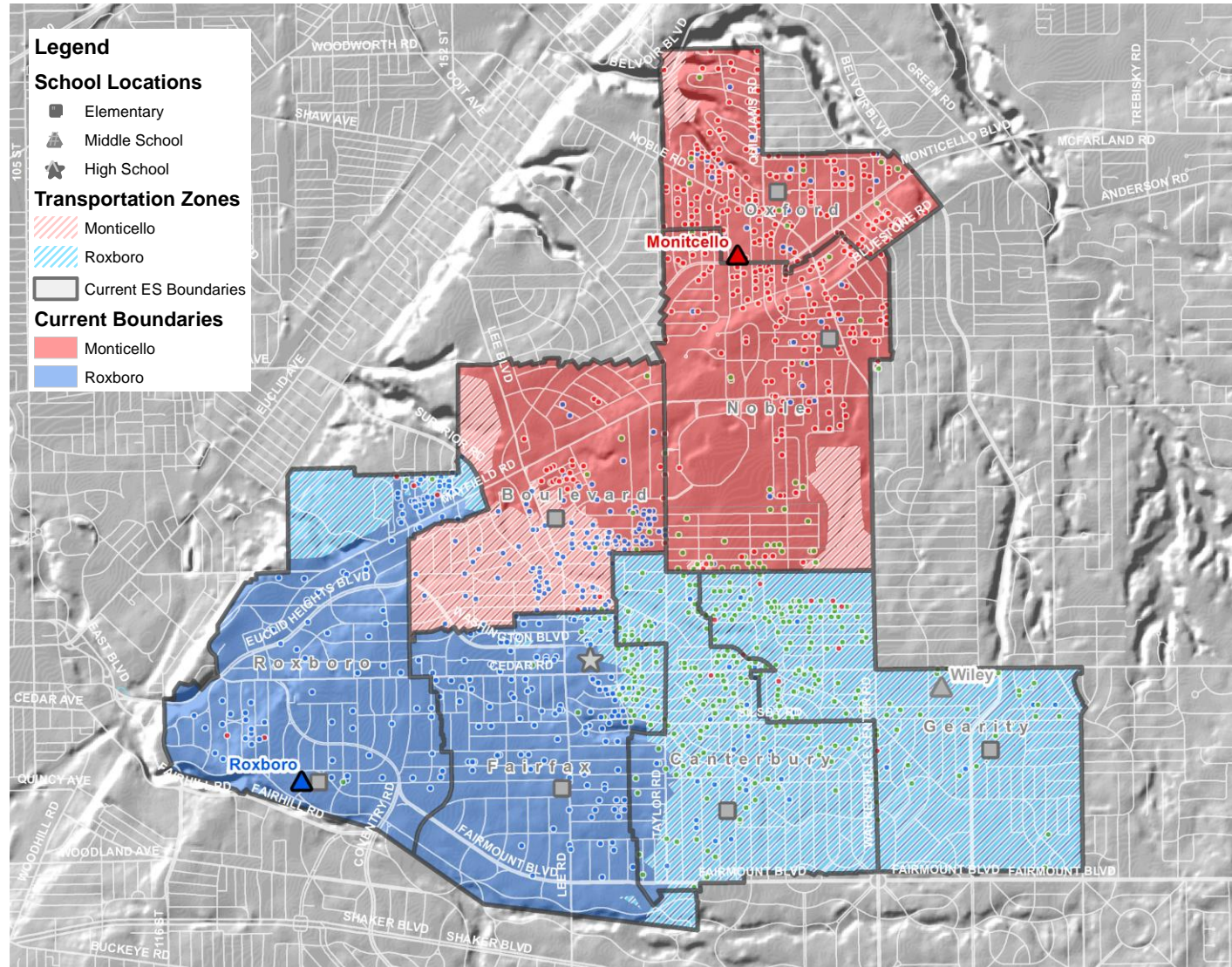
Option 2: Canterbury, Fairfax, Gearity, and Roxboro Feed to Roxboro | Boulevard, Oxford, and Noble Feed to Monticello

Strengths:

- Creates perfect feeders from elementary to middle school.
- Keeps the majority of the Wiley students together at Roxboro.
- Balances enrollment between both schools

Challenges:

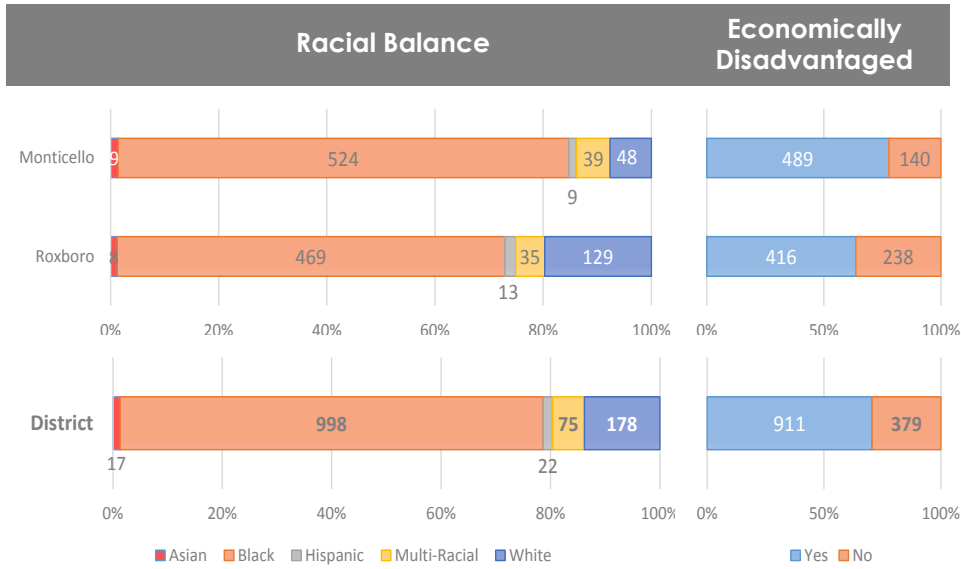
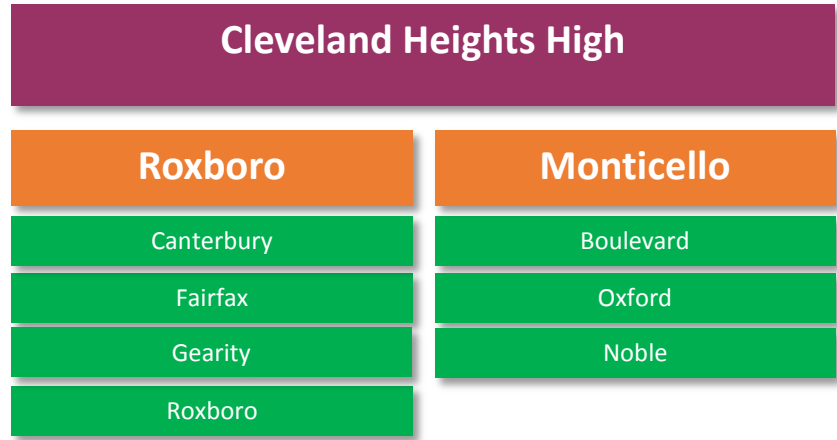
- May affect students who are currently attending Roxboro.



Option 2: Canterbury, Fairfax, Gearity, and Roxboro Feed to Roxboro | Boulevard, Oxford, and Noble Feed to Monticello

Current School	New School		
	Monticello	Roxboro	Total
Monticello	444	-	444
Roxboro	145	273	418
Wiley	40	381	421
Total	629	654	1,283
Capacity	799	808	
Utilization	79%	81%	
Total # of students moved	566		

Feeder Pattern



Transportation Eligibility

	Total Live In	Less than 2 miles	Greater than 2 miles
Monticello	629	522	48
Roxboro	654	251	403
Total	1,283	773	451

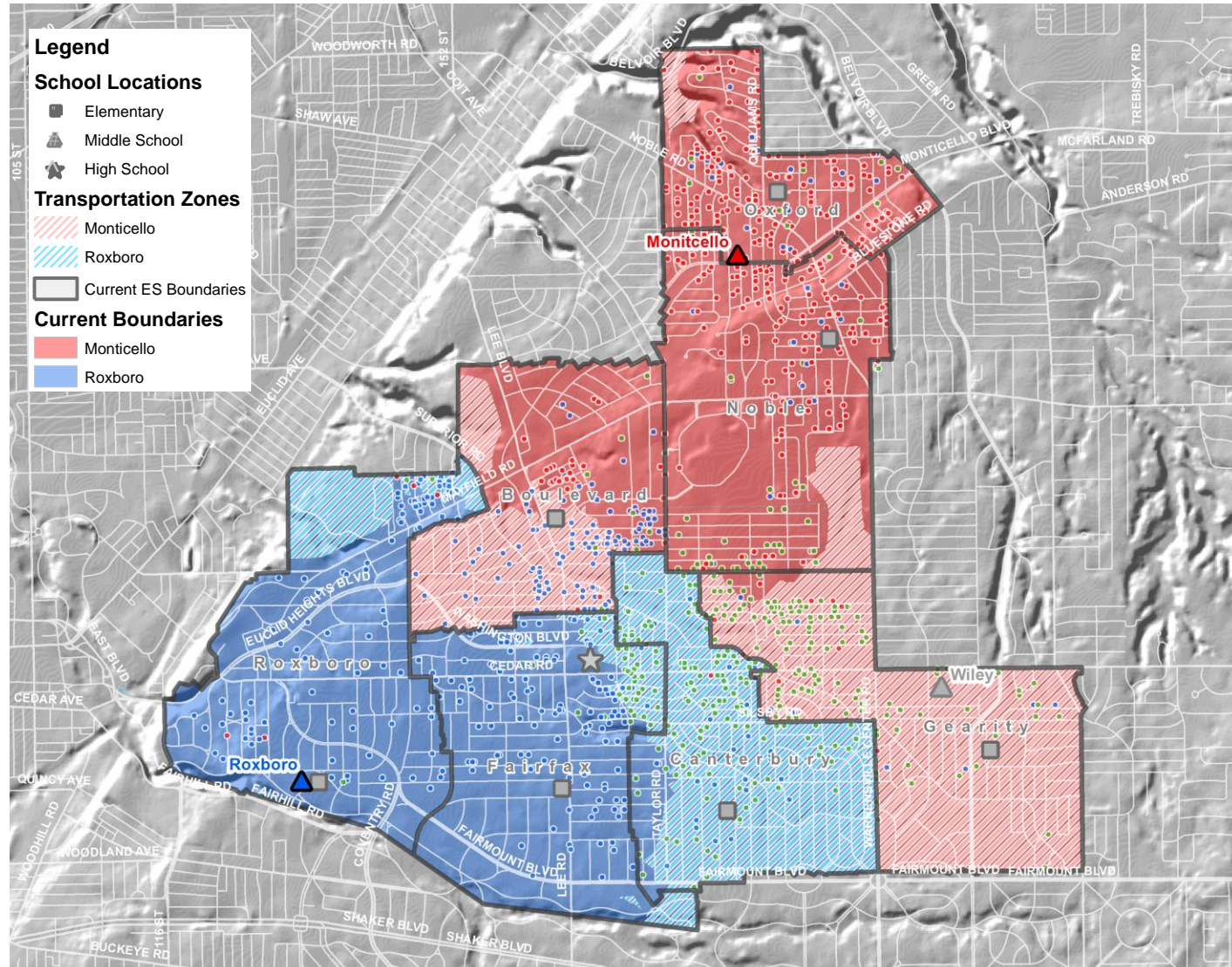
Option 3: Canterbury, Fairfax, and Roxboro Feed to Roxboro | Boulevard, Gearity, Oxford, and Noble Feed to Monticello

Strengths:

- Creates perfect feeders from elementary to middle school.

Challenges:

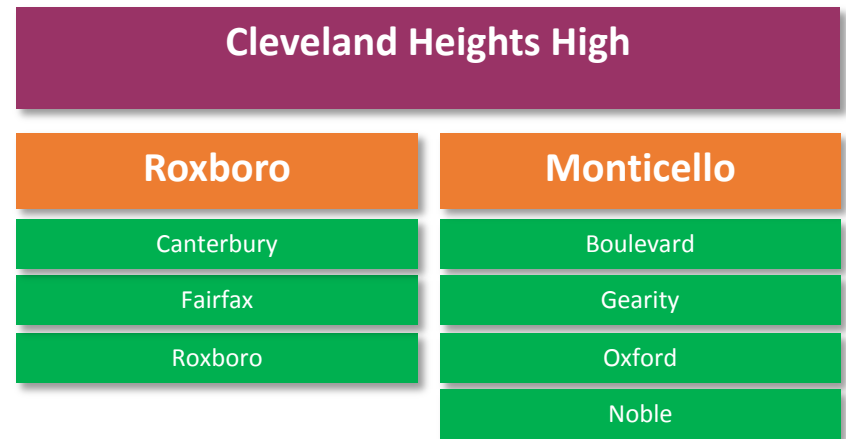
- May affect students who are currently attending Roxboro.
- Does not distribute students evenly between both schools
- Splits the current Wiley population between both schools.



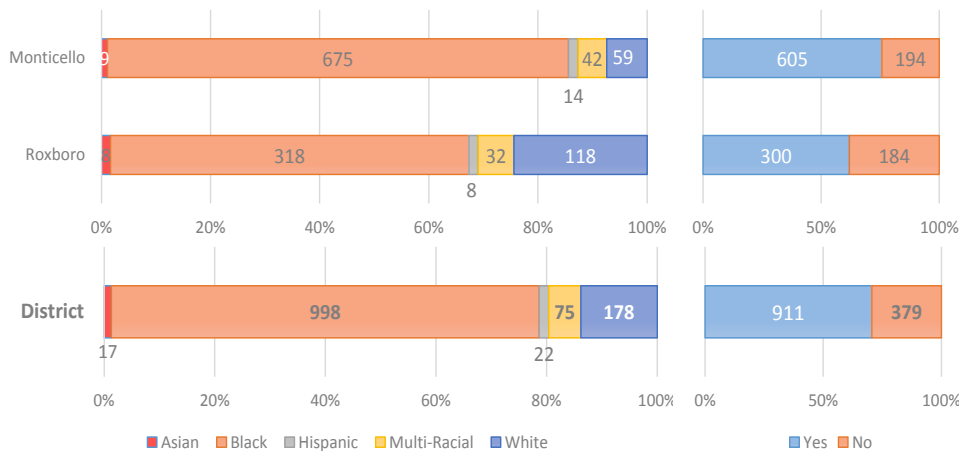
Option 3: Canterbury, Fairfax, and Roxboro Feed to Roxboro | Boulevard, Gearity, Oxford, and Noble Feed to Monticello

Current School	New School		Total
	Monticello	Roxboro	
Monticello	444	-	444
Roxboro	145	273	418
Wiley	210	211	421
Total	799	484	1,283
Capacity	799	808	
Utilization	100%	60%	
Total # of students moved	566		

Feeder Pattern



Racial Balance Economically Disadvantaged



Transportation Eligibility

	Total Live In	Less than 2 miles	Greater than 2 miles
Monticello	799	530	269
Roxboro	484	251	233
Total	1,283	781	502

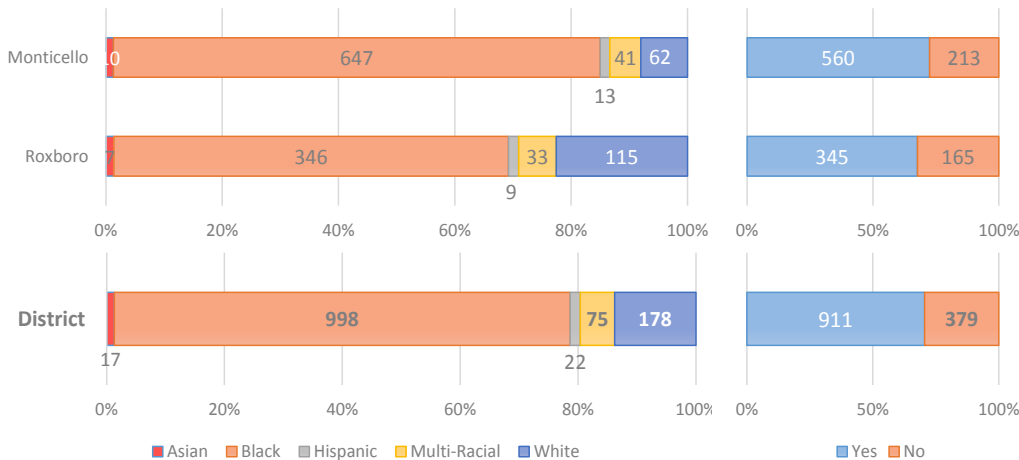
Option 4: Boulevard, Fairfax, and Roxboro Feed to Roxboro | Canterbury, Gearity, Oxford, and Noble Feed to Monticello

Current School	New School	Monticello	Roxboro	Total
		Monticello	394	50
Roxboro		-	418	418
Wiley		379	42	421
Total		773	510	1,283
Capacity		799	808	
Utilization		97%	63%	
Total # of students moved		471		

Feeder Pattern



Racial Balance Economically Disadvantaged



	Total Live In	Less than 2 miles	Greater than 2 miles
Monticello	773	432	341
Roxboro	510	267	243
Total	1,283	699	584

Options Comparison: Balanced Enrollment

	Rank
Individual	1st
Web	T-3rd
Group	1st

Utilization		
Option #	Monticello	Roxboro
Option 1	82%	78%
Option 2	79%	81%
Option 3	100%	60%
Option 4	97%	63%

Options Comparison: Clean Feeder Patterns

	Rank
Individual	4th
Web	5th
Group	7th

Option #	# of Elementary Splits
Option 1	1
Option 2	0
Option 3	0
Option 4	0
Current	3

Options Comparison: Disruption of Students

	Rank
Individual	2nd
Web	1st
Group	3rd

Option #	Number of Students Disrupted
Option 1	<input type="text"/>
Option 2	<input type="text"/>
Option 3	<input type="text"/>
Option 4	<input type="text"/>

Options Comparison: Longevity

	Rank
Individual	7th
Web	6th
Group	5th

- All options will work with the current elementary facility plan.
- Option 1 offers the most flexibility.

Options Comparison: Racial Diversity

Rank	
Individual	T-3rd
Web	3rd
Group	2nd

Percent Minority		
Option #	Monticello	Roxboro
Option 1	94%	77%
Option 2	92%	80%
Option 3	93%	76%
Option 4	92%	77%
Current*	95%	74%
District	86%	

*Note - Wiley live-in minority percentage: 89%

Options Comparison: Socio-Economic Diversity

	Rank
Individual	6th
Web	2nd
Group	4th

Percent Economically Disadvantaged		
Option #	Monticello	Roxboro
Option 1	75%	66%
Option 2	78%	64%
Option 3	76%	62%
Option 4	72%	68%
Current	77%	66%
District	71%	

*Note - Wiley live-in economically disadvantaged percentage: 68%

Options Comparison: Transportation Costs

	Rank
Individual	5th
Web	7th
Group	5th

Option #	Number of Students > 2 Miles
Option 1	<input type="text"/>
Option 2	<input type="text"/>
Option 3	<input type="text"/>
Option 4	<input type="text"/>

Options Comparison: Conclusion

- Balancing enrollment and minimizing the disruption of students were the most important criteria based on community feedback.
- Options 1 & 2 provide the best balance of enrollment and impact the fewest students.
- Option 1 provides more flexibility for the elementary facilities master plan.